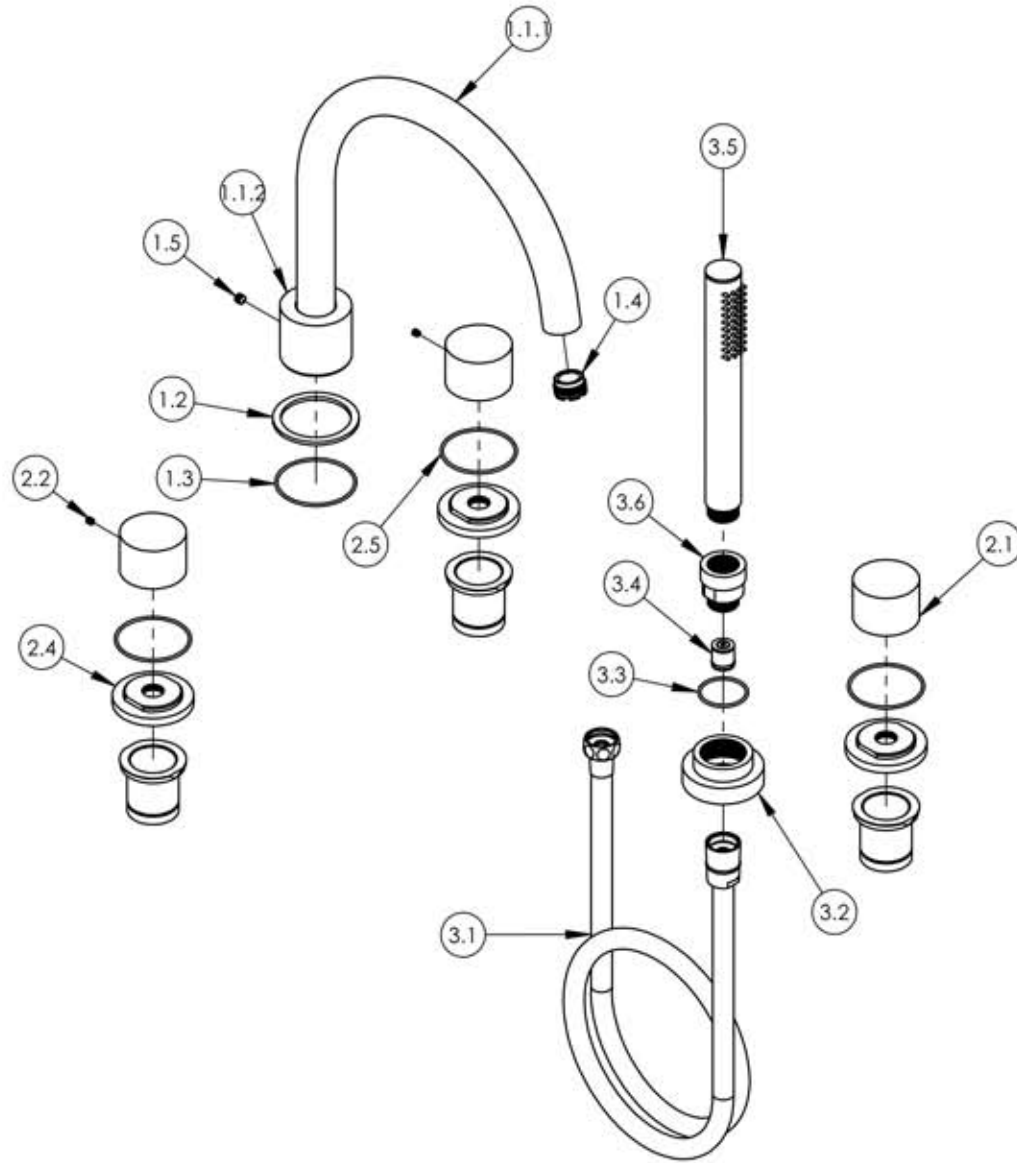


A

B

C

D



ITEM NO.	PART NUMBER	DESCRIPTION	QTY.
1	3-394/00	ASSY, HIGH ARC TUB SPOUT, DECK TUB BASIC II	1
1.1	2-128/00	SUB ASSY, HIGH ARC TUB SPOUT, DECK TUB BASIC II	1
1.1.1	P27032/00	HIGH SPOUT, ROMAN TUB, BASIC SERIES	1
1.1.2	11185/00	SPOUT BASE, BASIC II SERIES	1
1.2	11186/00	BASE FLANGE, BASIC II	1
1.3	90033	O-RING, 2"ID X 2-1/8"OD X 1/16"THK, AS-568-033	1
1.4	P05024	AERATOR CACHE COIN SLOT, M21.5X1.0 FULL FLOW	1
1.5	92191	M6X1.0 -6MM L	1
2	3-434/00	ASSEMBLY SMOOTH HANDLE, DECK TUB, BASIC II	3
2.1	10433/00	BASE HANDLE, CONTEMP, BASIC II	1
2.2	92008	SET SCREW, CUP POINT 8-32	1
2.3	11077	SLEEVE MOUNT, DECK (ROMAN) TUB	1
2.4	11344/00	ESCUTCHEON BASE, DECK TUB HANDLE, BASIC II	1
2.5	90032	O-RING, 1-7/8"ID X 2"OD X 1/16"THK, AS-568-032	1
3	4-025/00	HAND SHOWER HOSE ROUND, BASIC	1
3.1	P15008/00	HOSE, 1/2" BY 59" LENGTH	1
3.2	P18030	BASE, DECK HANDHELD, BASIC	1
3.3	90025	O-RING, 1-3/16"ID X 1/16"THK, AS-568-025	1
3.4	P15006	FLOW REGULATION CHECK VALVE	1
3.5	P15028/00	ROUND HANDSHOWER	1
3.6	P18029/00	ADAPTOR, HANDHELD BASIC SERIES	1

E

ZONE	REV.	DESCRIPTION	DATE	APPROVED
------	------	-------------	------	----------

REVISIONS

1261 LOGAN AVENUE
COSTA MESA, CALIFORNIA 92626
PHONE: 714.361.4800
FAX: 714.617.3120

PHYLORICH®

Defining Luxury Since 1959

PROPRIETARY AND CONFIDENTIAL

THE INFORMATION CONTAINED IN THIS DRAWING IS THE SOLE PROPERTY OF RJS MANUFACTURING. ANY REPRODUCTION IN PART OR AS A WHOLE WITHOUT THE WRITTEN PERMISSION OF RJS MANUFACTURING IS PROHIBITED.

-	-	INTERPRET GEOMETRIC DIMENSIONING & TOLERANCING IN ACCORDANCE WITH ASME Y14.5-2009 & ASME Y14.41-2003 STANDARDS, UNLESS OTHERWISE SPECIFIED. DIMENSIONS ARE IN INCHES. TOLERANCES ARE:
NEXT ASSY	USED ON	FRACTIONS ±1/64
APPLICATION		DECIMALS X.X: ±.1 X.XX: ±.01 X.XXX: ±.005
MATERIAL		ANGULAR ±.5°
FINISH		NAME DATE
	DRAWN	FME 11/17/2015
	CHECKED	LLO
DO NOT SCALE DRAWING		

DECK TUB SET WITH HAND SHOWER,
SMOOTH HANDLES, BASIC II SERIES

SIZE	ASM/PRT NO.	REV
A	230-49/00	-
SCALE: 1:5	WEIGHT: lbs.	SHEET 1 OF 2

5

4

3

2

1